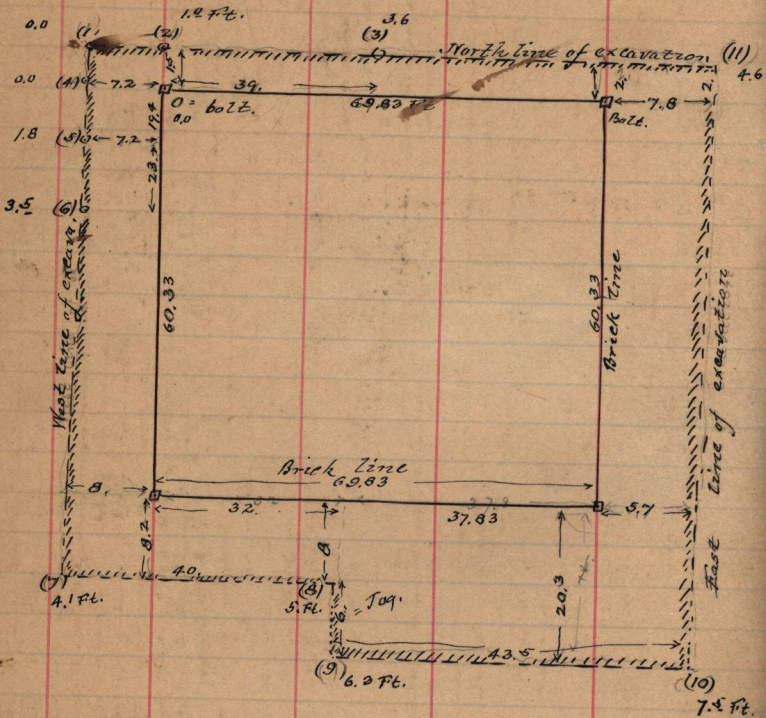


April 22-1891

Sketch of Plan of Perry's foundry

See notes on page 81.

Poplar Tree with P.M. 1.2 ft above ground.



1st } mean of 10. observations = 3.71 ft excava.  
 excava contains 6437.3 square feet.  
 " " 24075.5 cubic ft = 891.7 cys

2nd } section on E. end contains 499.7 sq. ft. area,  
 " " through point of  
 6' Jog (on E. of Jog) - 376.9 " " "  
 " " W. of Jog. - 343.0 " " "  
 " " on West end = 177.1 " " "  
 cubic ft of total on this method = 29468. cub. ft  
 = 1891.4 cub. yds which is about right.